

**20
22**

PREPARING FOR THE HARVEST

OUR PLAN FOR GOD'S MORE



SO EVERYONE CAN EXPERIENCE NEW LIFE IN JESUS



GOD'S CALL FOR MORE

Jesus spoke a powerful message that still speaks to us today. He said, "I tell you, open your eyes and look at the fields! They are ripe for harvest." The Lord impressed this word upon my heart and I kept it in prayer. During a time of prayer the Lord spoke again and said that Evangel was called to "prepare for the harvest". As we discerned what this meant the Lord spoke again through a member of Evangel and confirmed that the harvest was on its way, we just need to prepare.

As we travel through our community the harvests arrival is evident; we see new homes, apartment complexes and developments forming everywhere. The Lord has given us favor in this season to reach new families as they settle down in our region.

As we pray and prepare leaders for the coming season, we also realize that we must prepare our spaces for the harvest. Many of our mechanical structures are aged and in need of replacement. Our building should communicate that we are a welcoming space for families, children, and babies. Every space in our building should communicate the excellence of our God, and the beauty of his presence.

As we plan we realize that we don't have the luxury of waiting years to make these adjustments. The harvest is coming soon and the Lord has called us to prepare. In the coming pages you will see our plan to help love our community faithfully, and prepare for the harvest that is ahead. The board and I humbly ask that you join us on our journey to pursue God's calling for Evangel.

Pastor Tom



A PLACE FOR KIDS

MAKING CHURCH SAFE, AND FUN

REDESIGNED KIDS SPACES

Our Evangel Kids will meet in rooms that are vibrant, engaging, and exciting. With brand new furniture to better facilitate ministry to our kids.

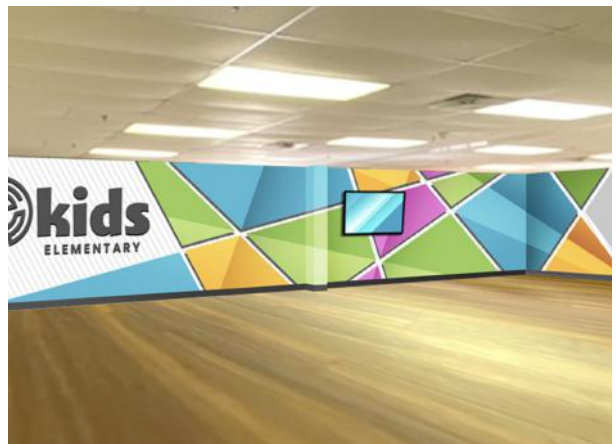
KIDS MINISTRY RESTROOMS

Evangel Kids and our nursery will have their own bathrooms to foster ease of access and safety for our most valued members.

SECURITY CAMERAS

We want our environments to be safe for all of our little ones. This new system will add an additional element of safety to Evangel Kids.

Future Evangel Kids Spaces



A PLACE FOR FAMILIES

New Parents Room

Parents will now have a space where they can nurse and care for fussy babies. This room will include a live-stream of our services so that moms and dads don't miss out on what God is doing at Evangel.

Additional Features

Our Parents room will have it's own lobby space that's accessible from the sanctuary. In addition, the space will include it's own bathroom for a more comfortable experience for families with babies.



A PLACE TO GROW

Refreshed Lobby

Our lobby will be refreshed, adding an additional connection point with adults and families, and a cafe that will help support global missions.



New Multi-purpose Room

Our multi-purpose class room will be adjacent to the sanctuary and will be used to assimilate guests into the life of the church. During the week, the room could be used to facilitate classes, meetings, and small groups.



UPDATED SYSTEMS

Updated Heating & Cooling System

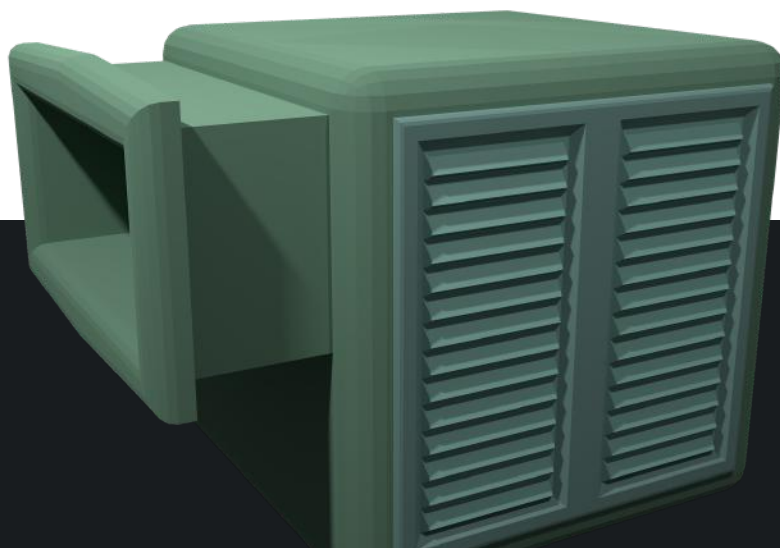
Our HVAC system is 24 years old and in need of replacement. Our new systems will be energy efficient and create a comfortable environment for our kids, students, and families.

Updated Sanctuary Audio

Our Audio will be updated to eliminate dead spaces of sound in the sanctuary, adding front-filler speakers to create a more complete sound.

New Church Kitchen

Our new kitchen will be well equipped for use for ministry events, missions banquets, and holiday gatherings.

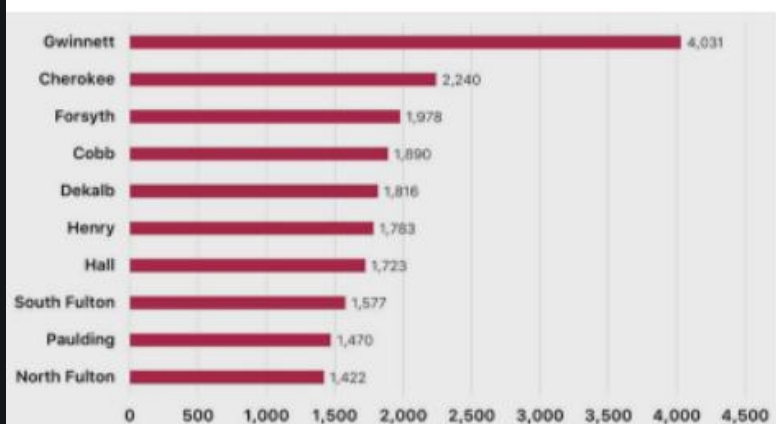


WHY DO WE NEED TO PREPARE FOR THE HARVEST

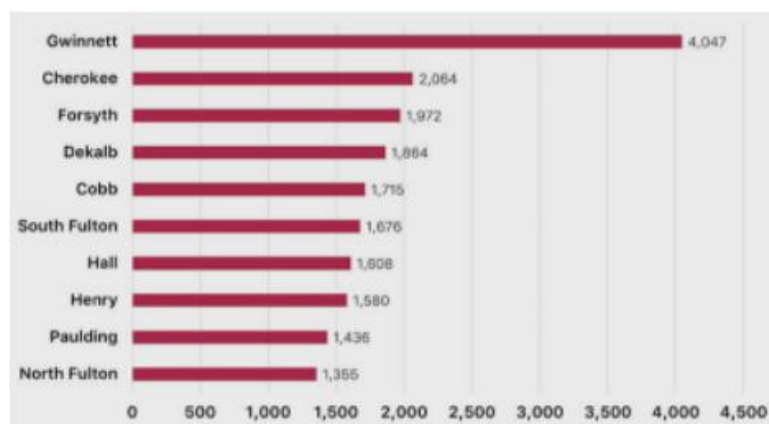
VITAL STATISTICS OF GROWTH IN GWINNETT COUNTY

Gwinnett County is growing

Starts Leaders



Closings Leaders



Our County is leading Georgia in new developments, home sales, and population growth. In 2010 our population was 805,321 in 2020 it was 957,062.

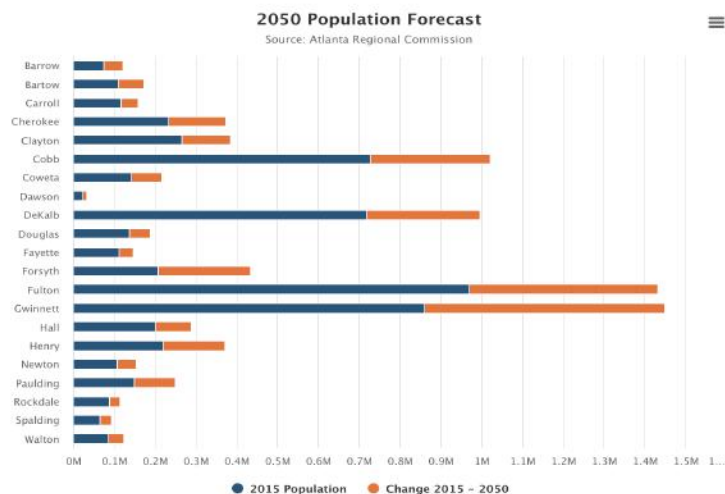
New First Quarter Homes

During the first quarter, Gwinnett County recorded 4,031 starts on an annualized basis, compared to the next most-active county, Cherokee, with 2,240. Gwinnett saw 4,047 annualized closings, compared to Cherokee's 2,064, and had 4,472 lots delivered during the quarter, followed by South Fulton, with 1,688 lots.

Atlanta's total metro area saw 29,111 housing starts on an annualized basis in the first quarter and 28,214 closings. There were 21,523 lots delivered during the quarter, St. Bourke said, citing data from Zonda/Metrostudy.

Population Projections

Between 2015 and 2050, the metro Atlanta region's total population and employment is forecast to increase by 51% and 34% respectively, within the same 30-year period.





Our Plan for the Harvest

- **Preparing for the Harvest Capital Campaign**

We are asking everyone who calls Evangel home to enter into a partnership with us by raising \$200,000 above our tithe and missions commitments over the course of 18 months.

- **Preparing for the Harvest Strategic Re-financing**

Our current mortgage is 363,632 with a monthly payment of 6,564.24.

We would re-finance 863,000 paying off our existent mortgage and utilizing the residual amount for Preparing for the Harvest Projects.

Our mortgage payment would be reduced to \$5,100 with a 30-year term.

- **Special Church Meeting for Refinancing**

We will be hosting a special church meeting following our worship gathering on Sunday September 11th for the consideration of refinancing, we're asking that every active member of the church attend and work together to Prepare for the Harvest.